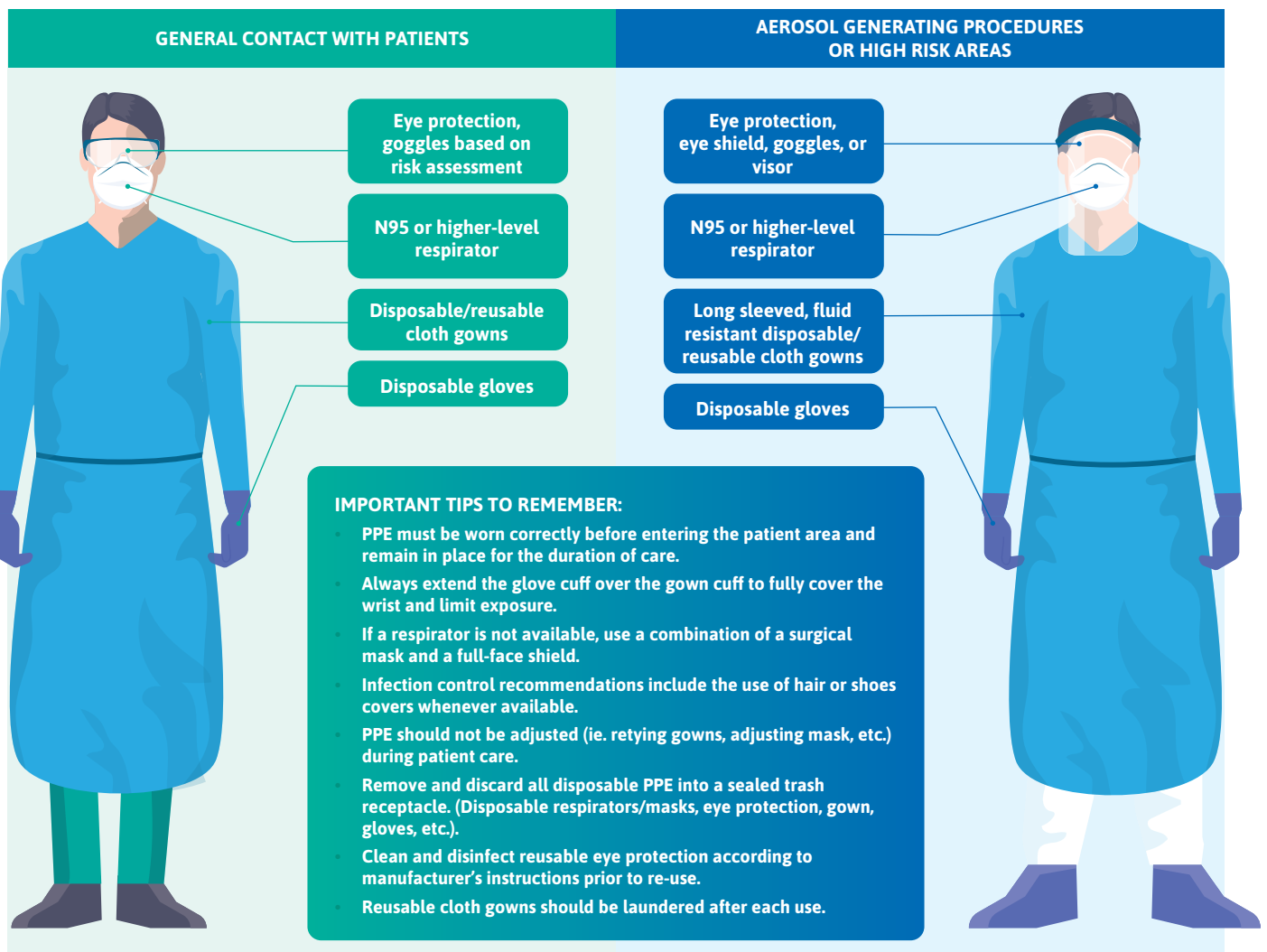


A VISUAL GUIDE TO SAFE PPE USE FOR DENTAL PRACTITIONERS

According to the CDC, high risk jobs are those with potential for exposure to known or suspected sources of COVID-19. Workers in this category include dental professionals performing aerosol-generating procedures (eg. cough induction procedures, some dental procedures, exams or invasive specimen collection). It is important to wear PPE to protect yourself and others from COVID-19.

Additional information on PPE use during clinical care can be found at <https://www.cdc.gov/coronavirus/2019-ncov/hcp/dental-settings.html>.



MEDICAL GLOVES MUST HAVE

- **Standard AQL 2.5 or less** (Lower AQL minimizes potential risk of contamination due to pinhole defects)
- **Conforms to ASTM F1671 and EN ISO 374-5 VIRUS** (Barrier against viral penetration)
- **Conforms to EN 455** (Standard for medical exam gloves)

➔ For more information on infection prevention and control of COVID-19, please visit: www.ansell.com/us/en/the-new-coronavirus

Please Note: Given the novelty of this coronavirus, recommendations from the source references are interim and advisory in nature and are based on current knowledge of the situation. Always ensure compliance with your local public health authorities regulations surrounding conservation, usage, and selection guidance of PPE to combat the COVID-19 pandemic.