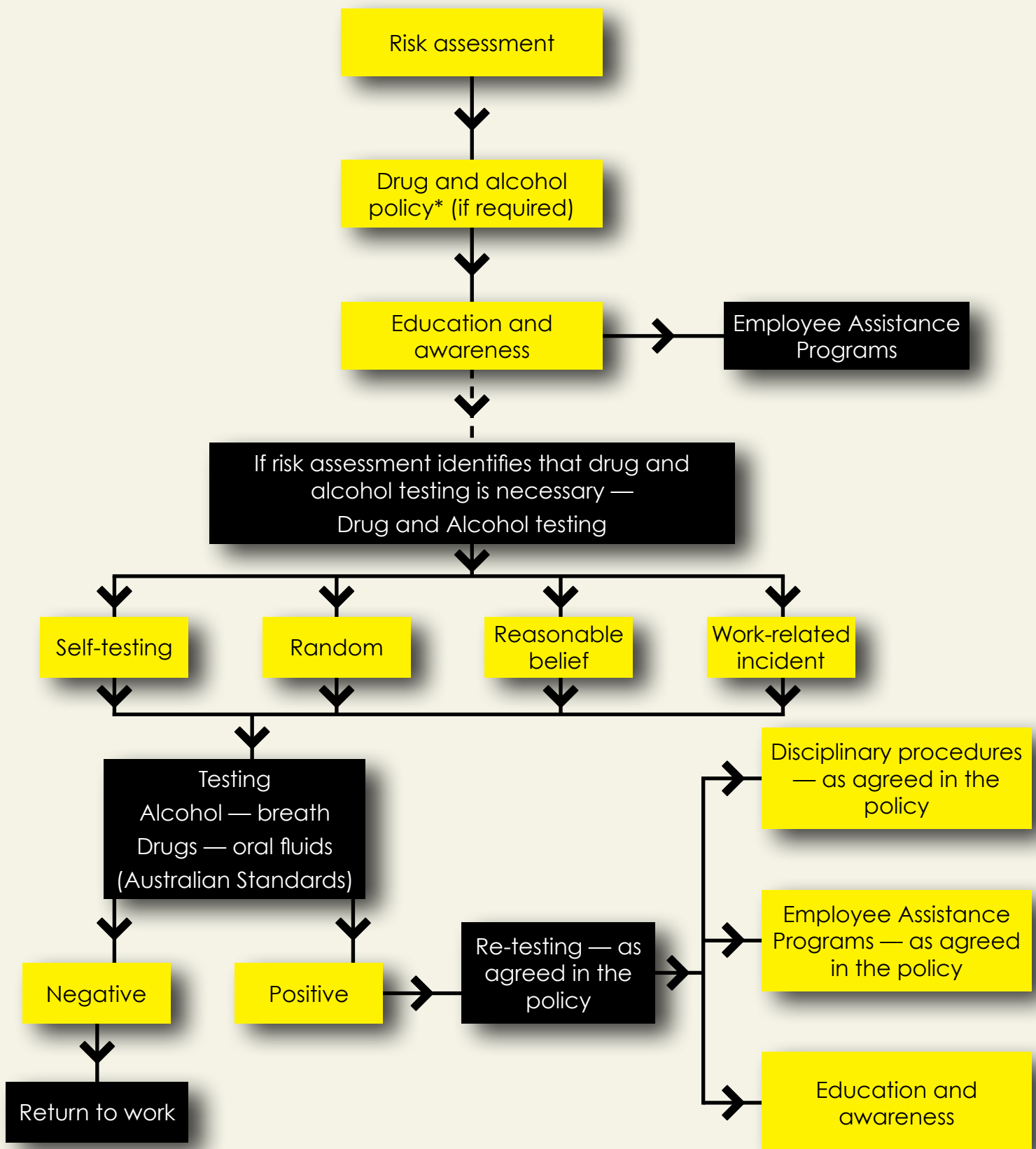


FRAMEWORK FOR ALCOHOL AND DRUG MANAGEMENT IN THE WORKPLACE



**Note: the policy needs to be assessed and evaluated on an ongoing basis.*

Reference: Workplace Health and Safety Queensland, Department of Justice and Attorney-General — Framework for Alcohol and Drug Management in the Workplace.